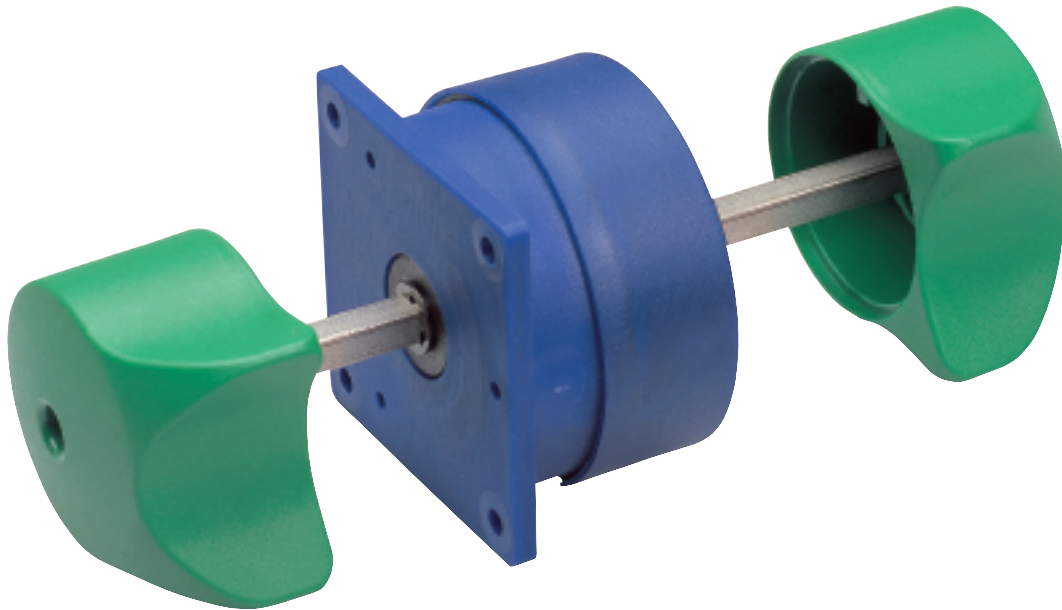


Accelerator Switch



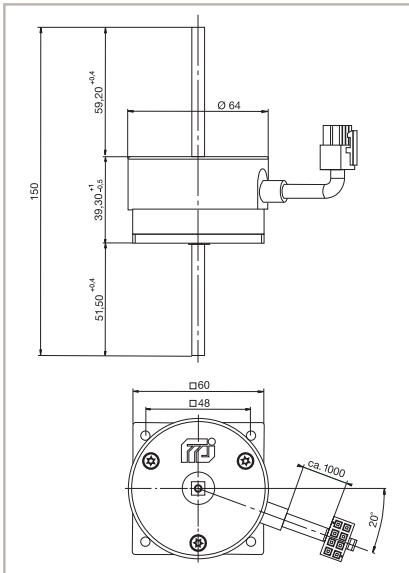
ACCELERATOR SWITCH ROTONDO

The accelerator switch ROTONDO is qualified as throttle-unit for electrically driven vehicles. The special design allows a single-sided use, with only one handle and a short shaft. As another option we can offer a continuous shaft with two handles. The desired speed will be output as an analogue signal, the two direction-signals and the zero-position-signal as a digital signal.

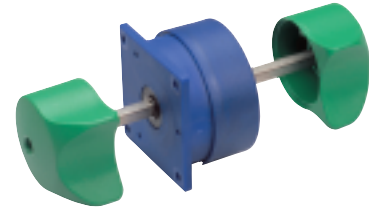
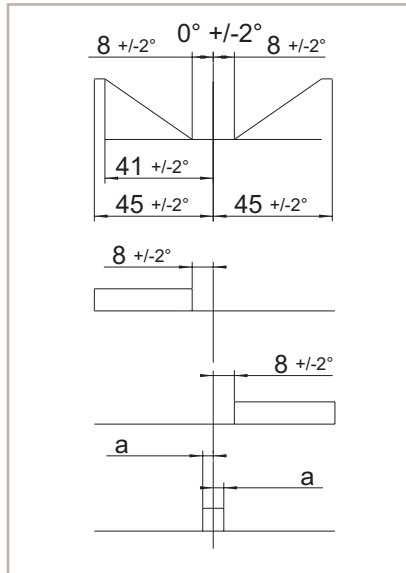
- Different axis-variations
- Two digital signals
- Optional one zero-position-signal possible
- Digital signals are available as high or low active one
- Optional internal potentiometer power supply with 5 V
- Protection class IP 54

Accelerator Switch

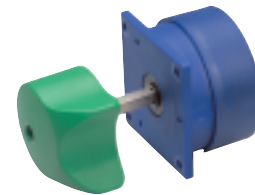
Dimensions [mm]



Characteristic Curve



Continuous Axis



Single-Sided Axis

Technical Specifications

Mechanical Specifications

Dimensions	See at the drawing
Mechanical movement	2 x 45°
Actuation	Square-axis 6 x 6 mm
Contact system	Cable with 8-pin
39-01-2080	Molex Mini-Fit, Jr.™

Electrical Specifications

Operating voltage	24 V _{DC} (16.5 to 32 V _{DC})
Power consumption	< 20 mA
Power supply voltage potentiometer	12 V max.
Resistance channel potentiometer	5.875 kΩ
Max. current analogue output	0.5 mA
Digital signal	
Output	Transistor with open-collector
Voltage max.	35 V _{DC}
Current max.	10 mA

Operating Conditions

Operating temperature	-30°C to +50°C
Life time	2,000,000 cycles
Vibration test	DIN EN 60068-2-6/27/29
Electro-magnetic compatibility	DIN EN 12895
Protection class (DIN EN 60529)	IP 54 (except connector)

Order Data

Part No.	Description
3105-00130-00	Continuous axis
3105-00130-01	Single-sided axis

Connector Pin Assignment Molex Mini-Fit, Jr.™

PIN	Signal
1	GND
2	Supply voltage (+ 24 V)
3	Digital signal – direction 1
4	Digital signal – direction 2
5	Analogue output (desired value)
6	U _B potentiometer
7	GND potentiometer
8	Optional

Connecting Diagram

